

Endonuclease banding reveals that atrazine- induced aneuploidy resembles spontaneous chromosome loss in *Crassostrea gigas*

Karine Bouilly, Alexandra Leitão, Raquel Chaves, Henrique Guedes-Pinto, Pierre Boudry, and Sylvie Lapègue

Abstract: Aneuploidy has previously been observed in the Pacific oyster, *Crassostrea gigas*, and shown to be negatively correlated with growth. Moreover, a significant impact of atrazine exposure has been described in *C. gigas*, and persistence of that effect has been observed between generations. Evidence of differential chromosome loss has been demonstrated in aneuploid karyotypes of *C. gigas* using the G-banding technique. Pairs 1, 5, 9, and 10 are characterized by the loss of 1 chromosome. As restriction enzyme (RE) digestion chromosome banding allows a better identification of chromosome pairs, we used this technique to identify which chromosomes are affected when aneuploidy is increased by exposure to atrazine. The progeny of oysters contaminated by atrazine were analysed using the restriction enzyme *HaeIII*. The study of 26 RE-banded aneuploid karyotypes showed that the same chromosome pairs (1, 5, 9, and 10) were affected by the loss of 1 chromosome (61%, 15%, 42%, and 42%, respectively). Further investigation is required to enable a better understanding of aneuploidy in oysters, especially with respect to why some chromosomes are more easily lost than others, and why cells tolerate the loss of these chromosomes.

Key words: aneuploidy, atrazine, restriction enzyme digestion chromosome banding, Pacific oyster, *Crassostrea gigas*.

Résumé : Des travaux précédents ont montré, chez l'huître creuse, *Crassostrea gigas*, la présence d'aneuploïdie et sa relation négative avec la croissance. De plus, une exposition à l'atrazine a eu un impact significatif sur l'aneuploïdie de *C. gigas* et cet effet a persisté à la génération suivante. La preuve d'une perte chromosomique différentielle a été démontrée dans des caryotypes aneuploïdes de *C. gigas* en utilisant la technique de marquage en bandes G. Les paires 1, 5, 9 et 10 sont caractérisées par la perte d'un chromosome. Le marquage par digestion d'enzymes de restriction permettant une meilleure identification des paires de chromosomes, nous avons utilisé cette technique pour identifier quels chromosomes étaient affectés quand l'aneuploïdie est augmentée par une exposition à l'atrazine. La descendance d'huîtres contaminées par l'atrazine a été analysée en utilisant l'enzyme de restriction *HaeIII*. L'étude de 26 caryotypes marqués avec cette enzyme a montré que les mêmes paires de chromosomes (1, 5, 9 et 10) étaient affectées par la perte d'un chromosome (61, 15, 42 et 42% respectivement). Des études supplémentaires sont nécessaires pour mieux comprendre l'aneuploïdie chez les huîtres, en particulier afin de comprendre pourquoi certains chromosomes sont plus facilement perdus que d'autres et pourquoi les cellules tolèrent la perte de ces chromosomes.

Mots clés : aneuploïdie, atrazine, marquage chromosomique par digestion d'enzymes de restriction, huître creuse, *Crassostrea gigas*.

K. Bouilly, P. Boudry, and S. Lapègue.¹ IFREMER, Laboratoire de Génétique et Pathologie, 17390 La Tremblade, France.
A. Leitão. IFREMER, Laboratoire de Génétique et Pathologie, 17390 La Tremblade, France, and University of Trás-os-Montes and Alto Douro, Centre of Genetics and Biotechnology, 5000-911 Vila Real, Portugal.
R. Chaves and H. Guedes-Pinto. University of Trás-os-Montes and Alto Douro, Centre of Genetics and Biotechnology, 5000-911 Vila Real, Portugal.

¹Corresponding author (e-mail: slapegue@ifremer.fr).

Introduction

Aneuploidy is a phenomenon commonly observed in oysters (Leitão et al. 2001a). In the Pacific oyster, *Crassostrea gigas*, the alteration of the normal diploid chromosome number ($2n = 20$) leads to hypodiploid cells with $2n = 19, 18$, or 17 (Thiriot-Quiévreux et al. 1992). The fact that somatic aneuploidy is negatively correlated with growth rate in this species (Leitão et al. 2001a) is of increasing concern for this economically important bivalve species. Moreover, a positive correlation between aneuploidy and atrazine (a selective herbicide widely used in agriculture) has been experimentally described in juvenile and adult *C. gigas* (Bouilly et al. 2003). This has environmental implications, as *C. gigas* is primarily reared in estuarine areas, subject to various recurring pollutants from agricultural or industrial wastes. The greatest concern is the persistence of atrazine's impact on Pacific oyster aneuploidy over time within and between generations (Bouilly et al. 2004).

Evidence of differential chromosome loss has been demonstrated in aneuploid karyotypes of *C. gigas* using the G-banding technique, which has shown that 4 (1, 5, 9, and 10) out of the 10 chromosome pairs of *C. gigas* are affected by the loss of 1 homologous chromosome (Leitão et al. 2001b). Application of the restriction endonuclease (RE) digestion chromosome banding technique to bivalves has yielded some success in mussels (Martínez-Lage et al. 1994), scallops (Gajardo et al. 2002), and oysters (Leitão et al. 2004). The digestion of bivalve chromatin with restriction enzymes produces specific chromosome bands (Martínez-Lage et al. 1994), and thus this technique may be useful in understanding the processes affecting chromosome loss. In this study, we use the in situ restriction enzyme technique to investigate which chromosomes are affected when aneuploidy is induced by exposure to an environmental factor (atrazine), as compared with spontaneous aneuploidy.

Materials and methods

The studied animals are the progeny of oysters exposed to different atrazine doses (10 and 100 $\mu\text{g/L}$) for 2 mo, as described in Bouilly et al. (2004). Two groups of controls from seawater from Marennes-Oléron Bay (Charente-Maritime, France) were used in this experiment. Atrazine concentrations in seawater were validated by the Institut de Recherche pour l'Ingénierie de l'Agriculture et de l'Environnement (Bordeaux, France) throughout the treatment period. At the size of 30–40 mm, 4.5 mo after fertilization, the progeny were incubated for 7–8 h in seawater containing 0.005% colchicine. The gills were then dissected in seawater, treated for 40 min in 0.9% sodium citrate, and fixed in a freshly prepared mixture of absolute alcohol – glacial acetic acid (3:1) with two 10-min changes followed by two 20-min changes. Slides were made from a piece of an individual gill following the air-drying technique of Thiriot-Quiévreux and Ayraud (1982).

Air-dried slides from 14 animals were aged at 65 °C for 6 h and then treated overnight with RE digestion. The restriction enzyme used for chromosome digestion was *HaeIII*, diluted in the buffer recommended by the manufacturer (Invitrogen Corporation, Life Technologies, Carlsbad, Calif.) to a final concentration of 30 U/100 μL (Leitão et al. 2004).

The restriction enzyme solution (100 μL) was evenly dispersed on the preparations by use of a coverslip. Digestion was carried out in a moist chamber at 37 °C overnight. After incubation, the slides were washed 2 times with water at room temperature and air-dried. The preparations were then stained for 20 min with Giemsa (1%). A Zeiss Axioplan 2 imaging microscope containing an Axiocam digital camera (Carl Zeiss International, Oberkochen, Germany) and Axio Vision software were used to visualize and photograph chromosome preparations. Digitized photos were printed from Adobe Photoshop (version 5.0) using only contrast, overlay, and colour optimization functions that affected the whole image. Chromosome preparations were subjected to karyotype analysis by the standard measurements of chromosomes pairs (measurements of size and centromeric index) and RE digestion chromosome banding technique.

We analysed 26 RE-banded aneuploid karyotypes and the same number of standard aneuploid karyotypes. A χ^2 test was used to compare the percentage of loss found in a population originating from hatchery crosses not exposed to atrazine (the “natural” population is considered as a control, Leitão et al. 2001b) with the percentage in the population contaminated indirectly by atrazine. The χ^2 test is a suitable test to compare our observed percentages and the published ones, as it measures the random deviation between observed percentages and theoretical percentages (values from Leitão et al. 2001b).

Results and discussion

An increase of 32% was observed in the level of aneuploidy of the progeny originating from contaminated oysters (15.97%) in comparison with the control level (12.11%). It was suggested that atrazine has an adverse effect on mitotic spindle fibre formation, leading to aberrant chromosome loss in oysters. The analysis of all aneuploid karyotypes of the studied oysters showed that only 4 of the 10 chromosome pairs (1, 5, 9, and 10) were affected by chromosome loss. Chromosome loss from either 1 pair (Fig. 1A) or more than 1 pair (Fig. 1B) per karyotype was observed. The loss of both homologues of 1 pair was not observed in any of the samples. Percentages of chromosome loss, independently calculated for each pair in the 26 RE-banded aneuploid karyotypes analysed, were 61%, 15%, 42%, and 42% for pairs 1, 5, 9, and 10, respectively (Table 1). Among the 26 observed metaphases, 42 chromosomes were missing: we analysed 13, 10, and 3 metaphases with $2n = 19, 18$, and 17 chromosomes, respectively (Fig. 2). It is interesting to note that the chromosome pair 1 was preferentially lost alone, in comparison with pairs 9 and 10, and that chromosome pair 5 was not lost alone.

To complete the analysis, we studied 26 standard karyotypes. The percentages of chromosome loss for these metaphases were 46%, 4%, 15%, and 46% for pairs 1, 5, 9, and 10, respectively (Table 1). However, the identification of these chromosome pairs could not be done as precisely as with the banding, especially with regard to pairs 5, 9, and 10, which are difficult to differentiate with precision. The in situ restriction enzyme procedure revealed clear and characteristic bands, so it was easier to identify each chromosome pair. This enabled the precise identification of each chromo-

some pair by comparison with standard karyotype. The percentage of chromosome loss observed for pair 5 was significantly lower than for pairs 1, 9, and 10. Therefore, pairs 1, 9, and 10 can be considered to be those predominantly affected by exposure to atrazine.

These results corroborate those of Leitão et al. (2001b), who observed chromosome loss in 95 G-banded aneuploid karyotypes of 56%, 19%, 33%, and 43% for pairs 1, 5, 9, and 10 respectively (Table 1). These results, obtained using the G-banding technique, are close to the ones we obtained with RE-banding, and a χ^2 test revealed that there are no significant differences between these 2 populations of karyotypes. RE-banding is more reliable than G-banding because this latter classical banding technique presents some disadvantages, such as limited repeatability, the large investment of time required, and the fact that the banding is lost during the fluorescent in situ hybridization procedure (Leitão et al. 2004). Moreover, the RE-banding technique allows a better preservation of the chromosome morphology, representing an additional advantage for chromosome identification of oysters. Such a phenomenon of preferential loss of chromosomes has already been observed in other species. Cieplinski et al. (1983) showed a statistically significant dependency in patterns of loss of specific chromosomes (both within and between cell lines from human–mouse myeloma), with certain chromosomes preferentially retained and others lost more often than expected under the assumption of randomness of segregation. Although several studies have shown that aneuploidy can be induced by chemicals, especially in humans and in rodents (e.g., Leopardi et al. 1993; Güerci et al. 2000), there are few studies on identification of lost chromosomes following chemical exposure. In humans, metabolites of benzene are highly effective in inducing loss of all or part of chromosomes 5 and (or) 7, which are involved in the development of myeloid leukemia (Zhang et al. 1998). In invertebrates, no studies have yet reported the identification of chromosome pairs lost as a consequence of a contaminated environment; furthermore, there are very few studies on chromosome identification in aneuploid karyotypes in this group of animals (Leitão et al. 2001b). Relatively few studies have examined the biochemical and physiological effects caused by atrazine on hormonal systems. Atrazine can elevate plasma thyroid hormone T₄ concentrations in salmonids (Waring and Moore 2004) and in salamanders (Larson et al. 1998). The mode of action of atrazine on oysters is poorly known, but this herbicide may interact with the mitotic spindle to cause aneuploidy. It was shown that herbicides of several classes act by inhibiting mitosis through direct interaction with tubulin (Duke 1990). Moreover, Grossmann et al. (2001) suggested that some triazines in algae lead to mitotic disruption by a loss of spindle and by inhibiting microtubule formation. Further experiments are needed to detail alternative modes of action for atrazine and its specific action in oysters.

In conclusion, the atrazine affected the same chromosome pairs in aneuploid karyotypes of the Pacific oyster *C. gigas* than in spontaneous situations. It would be of great interest to know why some chromosomes are more easily lost than others, and why the gill cells of *C. gigas* tolerate the loss of these specific chromosome pairs. This would allow a better understanding of the aneuploidy phenomenon in *C. gigas*.

Acknowledgements

Part of this research was supported by the Conseil Général de Charente-Maritime, the Ministère des Affaires Étrangères in France, and the French Embassy in Portugal. We thank R. Ben Hamadou for statistical analysis and T. Sharbel for his scientific advice.

References

- Bouilly, K., Leitão, A., McCombie, H., and Lapègue, S. 2003. Impact of atrazine on aneuploidy in Pacific oysters, *Crassostrea gigas*. *Environ. Toxicol. Chem.* **22**: 219–223.
- Bouilly, K., McCombie, H., Leitão, A., and Lapègue, S. 2004. Persistence of atrazine impact on aneuploidy in Pacific oysters, *Crassostrea gigas*. *Mar. Biol.* **145**: 699–705.
- Cieplinski, W., Reardon, P., and Testa, M.A. 1983. Non-random human chromosome distribution in human–mouse myeloma somatic cell hybrids. *Cytogenet. Cell Genet.* **35**: 93–99.
- Duke, S.O. 1990. Overview of herbicide mechanisms of action. *Environ. Health Perspect.* **87**: 263–271.
- Gajardo, G., Parraguez, M., and Colihueque, N. 2002. Karyotype analysis and chromosome banding of the Chilean–Peruvian scallop *Argopecten purpuratus* (Lamarck, 1819). *J. Shellfish Res.* **21**: 585–590.
- Grossmann, K., Tresch, S., and Plath, P. 2001. Triaziflam and diaminotriazine derivatives affect enantioselectively multiple herbicide target sites. *Z. Naturforsch. C*, **56**: 559–569.
- Güerci, A., Seoane, A., and Dulout, F.N. 2000. Aneugenic effects of some metal compounds assessed by chromosome counting in MRC-5 human cells. *Mutat. Res.* **469**: 35–40.
- Larson, D.L., McDonald, S., Fivizzani, A.J., Newton, W.E., and Hamilton, S.J. 1998. Effects of the herbicide atrazine on *Ambystoma tigrinum* metamorphosis: duration, larval growth, and hormonal response. *Physiol. Zool.* **71**: 671–679.
- Leitão, A., Boudry, P., and Thiriot-Quiévreux, C. 2001a. Negative correlation between aneuploidy and growth rate in the Pacific oyster *Crassostrea gigas*: ten years of evidence. *Aquaculture*, **193**: 39–48.
- Leitão, A., Boudry, P., and Thiriot-Quiévreux, C. 2001b. Evidence of differential chromosome loss in aneuploid karyotypes of the Pacific oyster, *Crassostrea gigas*. *Genome*, **44**: 735–737.
- Leitão, A., Chaves, R., Santos, S., Guedes-Pinto, H., and Boudry, P. 2004. Restriction enzyme digestion chromosome banding in

- Crassostrea* and *Ostrea* species: comparative karyological analysis within Ostreidae. *Genome*, **47**: 781–788.
- Leopardi, P., Zijno, A., Bassani, B., and Pacchierotti, F. 1993. In vivo studies on chemically induced aneuploidy in mouse somatic and germinal cells. *Mutat. Res.* **287**: 119–130.
- Martínez-Lage, A., González-Tizón, A., and Méndez, J. 1994. Characterization of different chromatin types in *Mytilus galloprovincialis* L. after C-banding, fluorochrome and restriction endonuclease treatments. *Heredity*, **72**: 242–249.
- Thiriot-Quiévreux, C., and Ayraud, N. 1982. Les caryotypes de quelques espèces de bivalves et gastéropodes marins. *Mar. Biol.* **70**: 165–172.
- Thiriot-Quiévreux, C., Pogson, G.H., and Zouros, E. 1992. Genetics of growth rate variation in bivalves: aneuploidy and heterozygosity effects in a *Crassostrea gigas* family. *Genome*, **35**: 39–45.
- Waring, C.P., and Moore, A. 2004. The effect of atrazine on Atlantic salmon (*Salmo salar*) smolts in fresh water and after sea water transfer. *Aquat. Toxicol.* **66**: 93–104.
- Zhang, L.P., Wang, Y.X., Shang, N., and Smith, M.T. 1998. Benzene metabolites induce the loss and long arm deletion of chromosomes 5 and 7 in human lymphocytes. *Leukemia Res.* **22**:105–113.

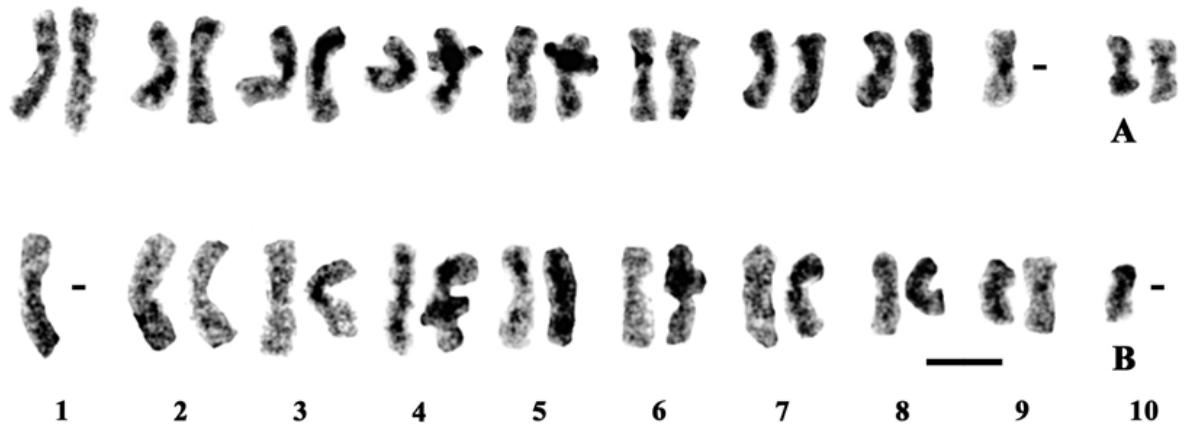


Fig. 1. Banded aneuploid karyotypes with the restriction enzyme *Hae*III in *Crassostrea gigas* contaminated indirectly by atrazine. (A) Chromosome loss in pair 9. (B) Chromosome loss in pairs 1 and 10. Scale bar = 5 μm.

Technique	No. of metaphases	No. of missing chromosomes	Percentage of chromosome loss, by pair			
			1	5	9	10
RE banding (this study)	26	42	61	15	42	42
Standard (this study)	26	29	46	4	15	46
G banding (Leitão et al. 2001b)	95	143	56	19	33	43

Table 1. Percentage of chromosome loss in *Crassostrea gigas* metaphase cells for each lost pair with 3 methods of karyotype analysis (restriction enzyme (RE)-banding, standard method, and G- banding).

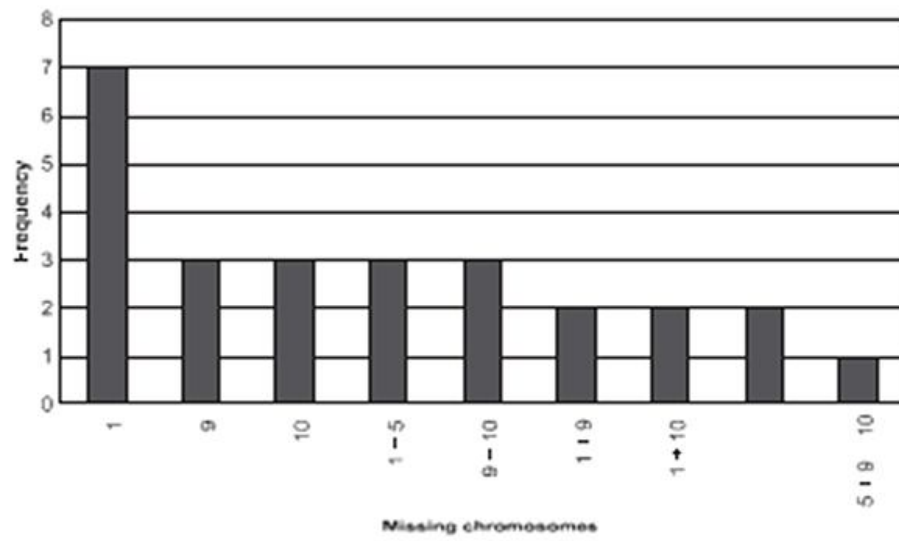


Fig. 2. Frequency of missing chromosomes in 26 restriction enzyme-banded aneuploid karyotypes realised from the progeny of oysters contaminated by atrazine.